

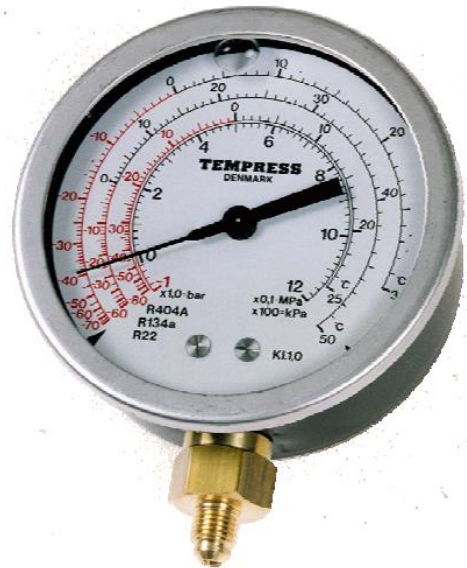


## PRESSURE GAUGES --- TEMPRESS

### (Refrigeration gauge – A10)

- Liquid filled
- Connection: Bottom or Rear
- Direct, Wall or Panel Mounting
- More than 40 different connecting threads
- Long-term stable
- Vibration protected
- Many types of refrigeration scales, graded in pressure and temperature

SPECIFICATIONS	
Pressure Gauges:	DN 63 Type A1001 DN 80 Type A1002 DN 100 Type A1003 DN 160 Type A1004
Case Material:	Steel, Black Enamelled
Options:	AISI 316
Glass Face:	Acrylic
Bezel:	AISI 316
Liquid Filling:	Glycerine
Connection:	Brass, Steel, AISI 316
Ranges:	-1-0+12 Bar -1-0+25 Bar Other ranges on request
Accuracy:	CL 1.0 (+/- 1% F.S)
Refrigeration Media:	R22, R134a, R404A, R507, Ammonia (R717) Other media on request



#### Application

This series of pressure gauge is well suited for application in the refrigeration industry.

#### Module System

The TEMPRESS program of connecting nipples and mounting auxiliaries makes it possible to deliver thread type and mounting form as required.

The program of refrigeration scales cover most refrigeration media available on the market. The scale can be delivered with 1, 2 or 3 refrigeration media.

#### Temperature Compensation

The unique system for temperature compensation ensures a correct reading even under heavily fluctuating ambient temperatures (0-60°C)

#### Safety

The temperature compensation system simultaneously works as blasting protection, i.e. if the measuring system blasts due to overpressure, the temperature compensation is blown out from the back of the instrument.

Approved by DNV (Det Norske Veritas).

\*\* Non-standard specifications from above can be customize on indent basis.

\*\*\*All information subject to changes without prior notice owing to continuous development.